

TINY TREASURES | CHRISTMAS ARTISTS' SALE



11 NOVEMBER – 17 DECEMBER 2023

CASM
CONTEMPORARY ART SPACES MANDURAH

Meet the 2023 Tiny Treasures Artists



ABILITY ARTS

The Ability Arts artists are a diverse mix of local creatives living with disabilities or mental health issues. The group works on individual self-guided projects and group projects in which each artist contributes their skills and ideas.



SHANNON BAGGOTT

Shannon Baggott finds joy in exploring the form and function of her creations, inspired by the natural environment and landscape. Shannon is committed to producing unique pieces with an emphasis on organic forms, experimenting with a variety of clays and glazes to bring her work to life.



VLADIMIR (VLAD) BARAC

Vlad Barac hails from Croatia and, after having called the south coast home for twenty years, has recently moved to Western Australia. Vlad has been creating art since he was 14 years old and draws from his memory to create colourful abstract paintings in acrylic and ink, inspired by surrealistic and contemporary imagination dreams.



KATRINA BARBER

Katrina Barber is an artist living with deafness and is nearly mute. Having very limited communication outlets, she uses art, and particularly colour, to share her inner thoughts and feelings. Katrina loves celebrations.



RENEE BARTON

Renee Barton creates mixed media and illustration works inspired by her local Mandurah - Bindjareb landscape, from the ocean to the estuary and the woodlands in between.



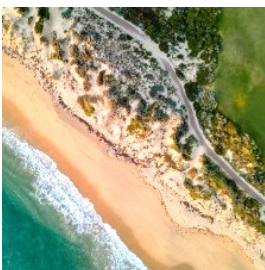
CHRIS BRITZA

Chris Britza has been an artist all her life, creating stylised, brightly coloured paintings using a variety of materials, including glass, which Chris fires in her kiln at home and sells worldwide. She now creates hand-built ceramic pieces that hopefully are inspirational, weird, and colourful, evoking wonderment and teasing the viewer's imagination.



CAROL CLITHEROE

Carol Clitheroe lives by the sea and has a great passion for the ocean. Her *Adventure* series of boats, and their furry and feathered captains, was inspired when she saw people using their phones and not engaging with their environment. Carol has created a series of sail boats, with a girl at the helm with aviator goggles and hat, going forth on many adventures. Now she has curious animals going on adventures of their own.



HENDRIK ENSLIN

Hendrik Enslin is a self-taught drone photographer living in Madora Bay and specialising in Western Australian landscapes. Mastering the art of aerial composition and flight, Hendrik developed his skills to create stunning images that showcase the rugged, red dirt landscapes, golden canola fields, vast coastlines and beaches, and more.



JUDY EVANS

Judy Evans is a West Australian artist who has a history in weaving and textile art. Judy's art practice now focuses on printmaking and she has participated in several group exhibitions in WA, showcasing textile and print works. She predominantly uses relief print methods to observe details found in the world around us. Her work celebrates our local flora and fauna, along with encounters we have in life's journeys.



BETHWYN FERGUSON

Bethwyn Ferguson is a local potter who has created a range of Christmas-inspired gifts and decorations.



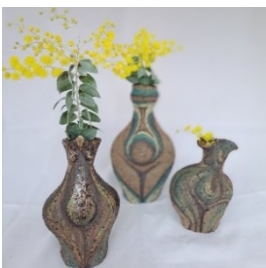
JUDITH GARDINER

As a young child, eager to learn, Judith Gardiner learnt to embroider from her aunt. As a mature-age student, Judith studied drawing, painting and printmaking at TAFE, and then textiles, in many forms, at Edith Cowan University. Judith particularly loved combining dye and print on fabric. In recent years, she has further developed these techniques, adding a variety of stitches to enhance her designs and bring her work together.



SHARON GEORGE

Sharon George is an artist with low vision who creates beautiful art pour canvases, scarves and vases that she then turns into collages or decorates with the assistance of her friend and support worker, Susan-Naomi Smith.



ALANA GRANT

Alana Grant works as a multi-disciplinary artist, currently working predominantly in clay. Alana's creations reflect her core values around family, inclusive communities, sustainability, nature and feminism.



LUCY GRAY

Lucy Gray paints oceans and flowers in celebration of Western Australian natural beauty. Lucy's ocean-scapes depict the power of water, as affected by weather and time, and connect to our personal stories and emotions. She is also an experienced and awarded artist and educator.



AMANDA HARRIS

The theme that runs through all of Amanda Harris's work is one of whimsy. Amanda's artwork is inspired by the everyday, domestic environment – dogs in backyards, birds in trees, kids' bikes, houses with windows that glimpse a feminine interior and the patterning of foliage inspired from her love of gardening.



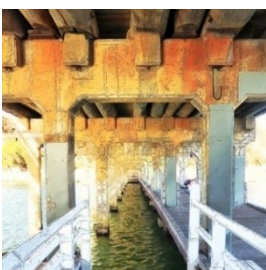
CAROL HENDERSON

Carol Henderson is a Falcon based artist and beachcomber who sources her materials from her local beach. Seaweed and tiny shells are combined to tell a story, then encased in a white box frame.



TONY HOLDING

Tony Holding is a retiree who likes working with his hands. Tony enjoys working with glass and woodwork, and sometimes a bit of drawing. He creates small works, usually glass and terracotta, wood with glass inserts or small leadlight sun-catchers.



BEATE KRATT

Beate Kratt's artworks are inspired by her love of the vast landscapes and remote places of Australia. Time, movement and the process of change are the subjects of her photographs, digital collage and encaustic works. Beate studied photography and art in Hamburg/Germany. Her works are in private and public collections in Germany, Australia, New Zealand, France, Canada and USA.



ALISON MATTHEWS

Alison Matthews has worked with clay for 40 years, starting in the UK with a local potter who introduced her to the wonderful world of wood-fired domestic ware. Since moving to Australia Alison has moved toward whimsical but functional pieces. She works in both white and terracotta earthenware, as well as stoneware. Alison is part of a small local pottery group where she is inspired and supported by a wonderful group of potters, who share her love of clay.



TONY McALINDEN

Throughout his life, Tony McAlinden has had a fascination with the Australian landscape. Tony's paintings endeavour to capture the vibrancy of our countryside which, for him, is full of light, life and colour.



ANDY McNEILL

Over the last two years, Andy McNeill has been inspired by our native wildlife to capture the beauty of the natural world. Andy is a volunteer reptile relocater, whose photography of venomous snakes started his love of photography. His passion has grown into more than just snakes, and he now photographs much of our native world.



LIANA McNEILL

Liana McNeill is an artist and a creative. Liana studied Fashion Design at Curtin University, graduating in 2018. Since then, she has experimented with many forms of art, including textured art, digital art and photography/film.



SHEILA McNEILL

Sheila McNeill loves the flow of silk dyes on silk. Sheila likes to experiment with layers of colours, mixing and blending the dyes as they are flowing. She is passionate about the natural world, especially the oceans, and creates work to celebrate the beauty of the environment here in Western Australia.



MARIE MITCHELL

Inspired by the potential in the world around her, Marie Mitchell's art expresses the things she values most. Art is her voice to reaching others' hearts and minds. Marie wants her work to inspire joy, changes in attitudes and actions towards respecting the environment.



ELLI MOODY

Elli Moody works as an illustrator, artist and community arts facilitator. Elli loves to try new ways of working, but always comes back to drawing and telling a story. Her arts practice is a mix of more commercial illustration, commission work and experimenting and playing with new ideas and media.



TAMMY MORONEY

Passionate about botanical and small-scale drawings, the use of black ink and limited tonal values, Tammy Moroney loves drawing what she sees as she explores the beautiful Peel region. Whether it be spectacular banksia, wanderer butterflies, or even the majestic Giants, she sketches what catches her attention.



LYN NIXON

Lyn Nixon's work explores the fragility of human existence and the relationships we have with the planet and each other. She holds a Bachelor of Fine Arts from Curtin University of Technology, Perth, and has been a practicing artist since 2015, working primarily with photography and printmaking. Her practice has recently incorporated ceramics and multi-media, to communicate some of the complex issues facing our world today.



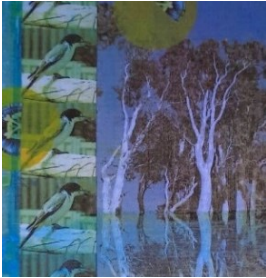
TENNILLE O'NEILL

Tennille O'Neill is a Mandurah local who has always enjoyed creating and learning, through participating in workshops of interest or experimenting with different mediums that are unfamiliar to her. Tennille is currently experimenting with different mediums including papercraft, sculpture and polymer clay.



RANDOM PALLETTE

Random Palette is a group of dedicated artists of a variety of ages and experience, usually working in acrylics. The group has been working and exhibiting together for up to 15 years. They are currently working at the CASM Workshop on a variety of projects ranging from the abstract to suggestions of realism.



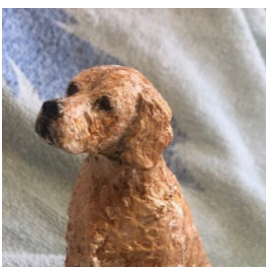
CLAIRE PANNELL

Claire Pannell uses art and technologies to explore the relationship between science and the world we live in through music and video. Claire is also a maker who focuses on using collage and photo montage to create useful and “useless” playful objects.



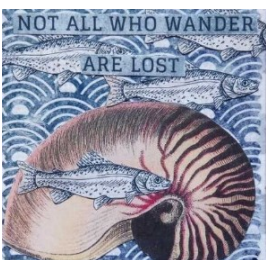
LINDA PERRY

Having had a passion for creating craft and sewing projects, Linda wanted to share her "Free motion" creations. These upcycled creations take the form of brooches, bookmarks, fridge magnets and keyrings, handmade with love.



KATHLEEN PHILIP

Kathleen Philip specialises in custom made dog figurines using the dog owner’s photographs. These figurines are bisque fired and painted with acrylic paints. Kathleen also produces garden gnomes, frogs and the like, that are fully glazed for outdoor placement.



PATRICIA PHILP

Patricia Philp believes that successful art making comes with the process of building the pieces, and that the hardest thing about art is the stepping out and beginning it. Patricia has learned to have faith that the work begins with an inspiring idea and then follows with the steps decided on, to move through the realized processes of creating it.



MARINELLA PICCIRILLO

Marinella Piccirillo uses her artwork to express personal ideas of beauty and shows the charm in everyday objects and how they make a difference in our lives.



LISE ROGET

Lise Roget has always enjoyed painting but started by studying textiles in Europe before moving to Sydney and studying watercolour painting. Lise taught watercolour painting in New South Wales and Western Australia and enjoyed participating in group exhibitions. She now uses painting to relax and still uses watercolour and pen, but mostly enjoys using acrylic paint to create her artworks.



CHRISTOPHER ROSE

Christopher Rose's work presents the viewer with a complex depth and grittiness. Christopher uses industrial materials and techniques to create layered, dense and rich objects that unveil an unconventional beauty.



BRIGITTE SCHENKELS

Brigitte's Jewels celebrate and create original handcrafted art in the form of unique pieces of jewellery for children, women and men. Manager and artist, Brigitte Schenkels, believes there is value in creating something handmade. A handmade object carries within it the energy of the maker and imprints a piece of the artist's soul.



LEA SMART

Being creative of mind and using her hands to create comes naturally to Lea Smart, having spent a lifetime studying and working in a broad range of tactile therapies. Taking reference from nature, Lea's artwork includes the mediums of pastels, watercolour, acrylics and oils.



GABRIELE (GABI) SMITH

Gabi Smith uses broken tiles in her mosaic art to showcase that beauty can and does emerge from brokenness. Inspiration springs forth while walking and connecting, through her senses, to the 'song' of nature. She explores her growing connection with nature and spirit by using flora, fauna and sacred geometry in her art to cultivate the viewer's connection with the natural world.



JULIE SMITH

Julie Smith is a Mandurah based textile and wearable art designer, who also makes gemstone and polymer clay jewellery.



BEC THOMAS

Bec Thomas has created a series of rustic items including oil burners, dishes, bowls, candles and infuser pots. The items are all themed to fit six glaze colours which tie in with the candle scents. Bec also makes a spectrum of small vases in a variety of colours. In addition to the structural components of her pieces, she also makes all her glazes.



ROBIN THORNE

Robin Thorne is a Balardong/Wilmen man of the Nyoongar Nation of the south of Western Australia. Ten years ago, for unknown reasons, Robin suffered an acquired brain injury. The most recent years of his recovery have allowed him the time and space to fully explore his artistic ability, which had previously only been a desire within.



KEVIN TIPPETT

Kevin Tippett is a 90-year-old artist who has been mostly self-taught since 1979. Kevin spent many years driving trucks in the north-west of Western Australia, exposing him to a variety of vibrant and captivating colours which have greatly influenced his paintings. His unique perspective and innate talent have allowed him to create stunning artworks that capture the essence of the colours and landscapes he encountered in his life.



DI TURNER

Using natural products and recycled containers, Di Turner's kits teach you how to be creative at the same time as reducing waste. 100% Soy Wax, natural fragrances and wicks for candles, non-toxic bath bombs and soaps make up Di's range of DIY kits.



JOIE VILLENEUVE & RAE GOOCH

Where the ocean and land merge has captured Joie Villeneuve's heart and enlightened her soul. The images and symbols that appear in her work are heavily influenced by this interpersonal connection and present themselves in colours and shapes, a perceived horizon line, a boat or buoy, or the subtle pink as the sun sets and reflects off the sand and water. Environmental poet Rae Gooch has collaborated with Joie in providing a series of poems to support her artwork.



TANYA WEEKS

Tanya Weeks' day job is a computer programmer and even though she loves to create programs, it's good for her soul to be artfully creative too. Tanya likes to watch the world around her and her enthusiasm for the weird and wonderful in life is reflected in her art.



LISA WRAY

Lisa Wray spends many hours sanding discarded branches and wood chips to create amazing mini driftwood sculptures. These characteristic sculptures represent the Serpentine and Murray Rivers, and the estuary's many seasonal changes of colours, textures, light, patterns, and natural characteristics.



CINDY WRIGHT

Nature's purest raw materials charged with fascinating material paradoxes like fragility, solidity, liquidity, translucency, and opacity transformed into glass then further, into a variety of ways by the creative process. The end result being Cindy Wright's unique and one of a kind, tangible tiny treasures!

TINY TREASURES ACTIVATION AND ENGAGEMENT

Each year for Tiny Treasures, local artist groups and individuals share larger items of their artwork practice over the weekends of the Tiny Treasures Christmas Artists' Sales.

This year, you are invited to connect with the emerging textile and wearable art group Creative Designers Mandurah, vivacious painting group Random Palette and oil painter, Tony McAlinden.

Come along on the dates listed below to discover and support more of Mandurah's local arts groups and artists:

Random Palette:	Saturday 11 November Sunday 12 November
Tony McAlinden:	Saturday 18 November
Creative Designers Mandurah:	Saturday 25 November Saturday 16 December

CASM acknowledges the Bindjareb Noongar people as the traditional custodians of the land (boodja) on which CASM is situated and operates.

CASM pays respect to Noongar elders past, present and future and recognises their continuing culture and contribution they make to the life of this city and region.



CONTACT US:

Stay up to date by subscribing to the monthly Creative Mandurah newsletter via the CASM website and follow us on Facebook!

CASM is centrally located at 63 Ormsby Terrace, Mandurah.

OPEN:

Wednesday to Sunday 10am – 4pm during exhibition dates.

CONTACT:

Phone: 9550 3662 | 9550 3989,
9am-4pm Wednesday – Friday

Email: casm@mandurah.wa.gov.au

Website: www.artspacesmandurah.com.au

