

# City of Mandurah ~ Facility Information Guide

## BORTOLO PAVILION

Corner of Bortolo & Murdoch Drive, Greenfields

### General Description

Large community hall with high ceilings, kiosk/kitchen facilities, carpeted floor and separate dance floor. This facility is air-conditioned and has plenty of natural light coming through the many windows.

The pavilion is suitable for many activities including, dance, karate, tutoring and church group activities. The main hall is ideal for a variety of large functions, however please be advised that a **party ban** was imposed on the facility due to damage. If you wish to hire this facility, please forward a function details for consideration by the Manager Recreation Services.

Exterior



Interior



### General Information



<b>Capacity:</b>	approx 150 people seated
<b>Security:</b>	Key System
<b>Temperature Control:</b>	4 ceiling fans Air conditioning
<b>Safety:</b>	Fire extinguishers and blankets
<b>Toilets:</b>	Ladies and gents * Disabled
<b>Storage:</b>	1 storage room - 3 lockable cages
<b>Cleaning Equipment:</b>	Contained in storage room
<b>Noticeboards:</b>	2 in main hall, 1 in foyer
<b>Electricity:</b>	Power points in main hall, kitchen, and foyer and storage room
<b>Parking:</b>	45 bays, 2 disabled

### Main Hall

<b>Tables:</b>	7 Trestle tables approx
<b>Chairs:</b>	100 Chairs approx
<b>Floor:</b>	Carpet with parquetry dance floor

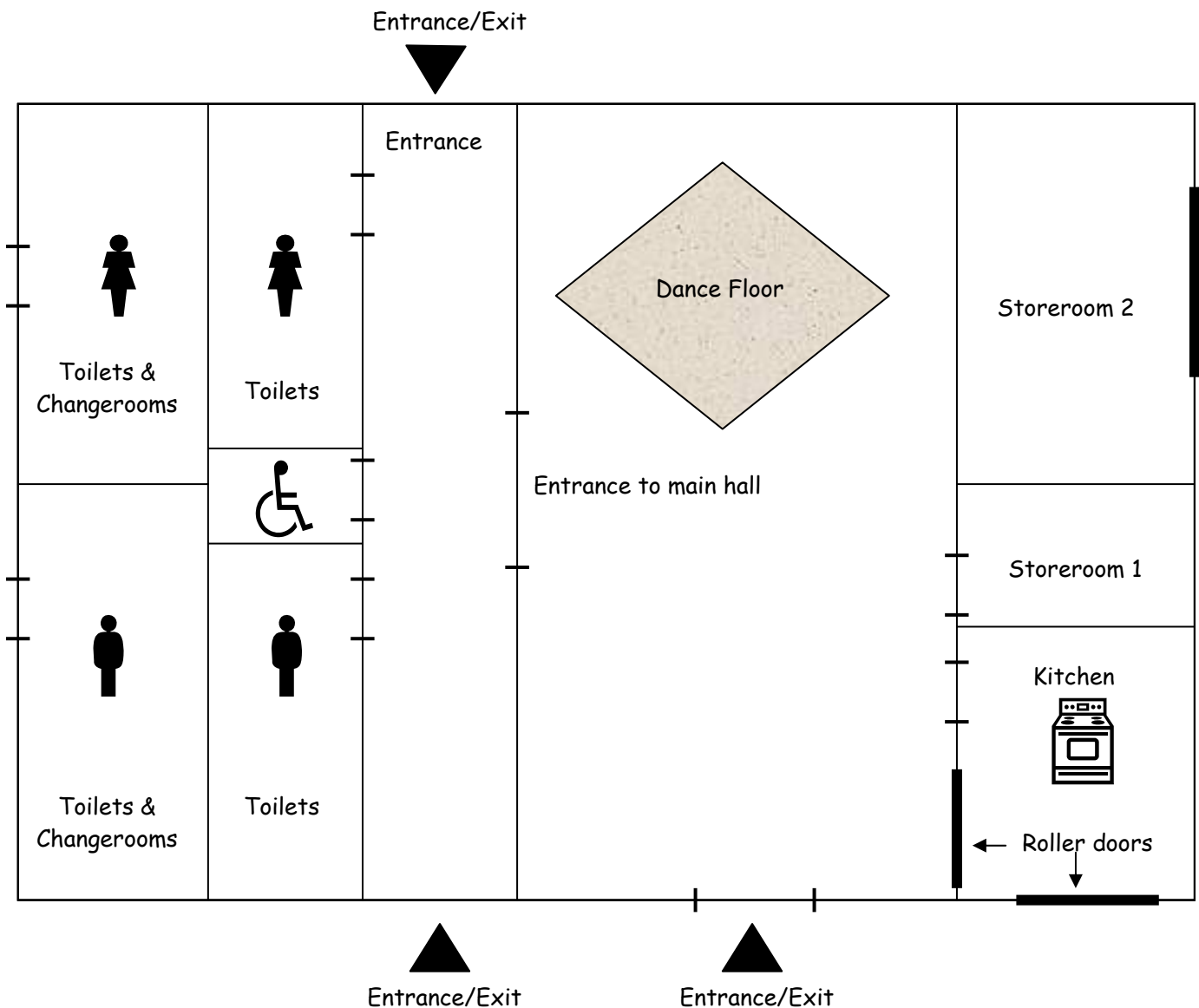
### Kitchen

<b>Stove:</b>	1 oven/grill stove - gas
<b>Fridge:</b>	fridge/freezer
<b>Urn:</b>	1 wall mounted unit
<b>Bins:</b>	1 kitchen bin
<b>Cupboard:</b>	no lockable cupboards. Ample bench space and shelving.



# City of Mandurah ~ Facility Information Guide

## BORTOLO PAVILION - Diagram



## Directions to the BORTOLO PAVILION Corner of Murdoch & Bortolo Drive, Greenfields

- Travel North / South along FREMANTLE Road
- Turn RIGHT / LEFT into Murdoch Drive
- Turn LEFT into Bortolo Drive
- Turn RIGHT into the Bortolo Pavilion carpark