

City of Mandurah ~ Facility Information Guide

FALCON PAVILION

Corner Flame & Lynda Streets, Falcon

General Description

Large community hall with high ceilings, open plan kitchen facilities, carpeted floor and separate dance floor. This facility is air-conditioned and has plenty of natural light coming through the many windows.

The pavilion is suitable for many activities including, dance, karate, meetings and church group activities. The main hall is ideal for a variety of large functions, however please be advised that a **party ban** was imposed on the facility due to damage. If you wish to hire this facility, please forward a function details for consideration by the Manager Recreation Services.

Exterior



Interior



General Information



Capacity:	approx 150-180 people seated
Security:	Key System
Temperature Control:	Ceiling fans & 2 Rennai gas heaters
Parking:	53 parking bays
Safety:	Fire extinguishers and blankets
Disabled Access:	Small access ramp on north side of building
Toilets:	Ladies and gents
Storage:	1 storage room
Cleaning Equipment:	Contained in storage room
Noticeboards:	1 in main hall
Electricity:	Power points in main hall and kitchen

MAIN HALL

Tables:	9 Trestle tables approx
Chairs:	79 Chairs approx
Floor:	Carpet with parquetry dance floor

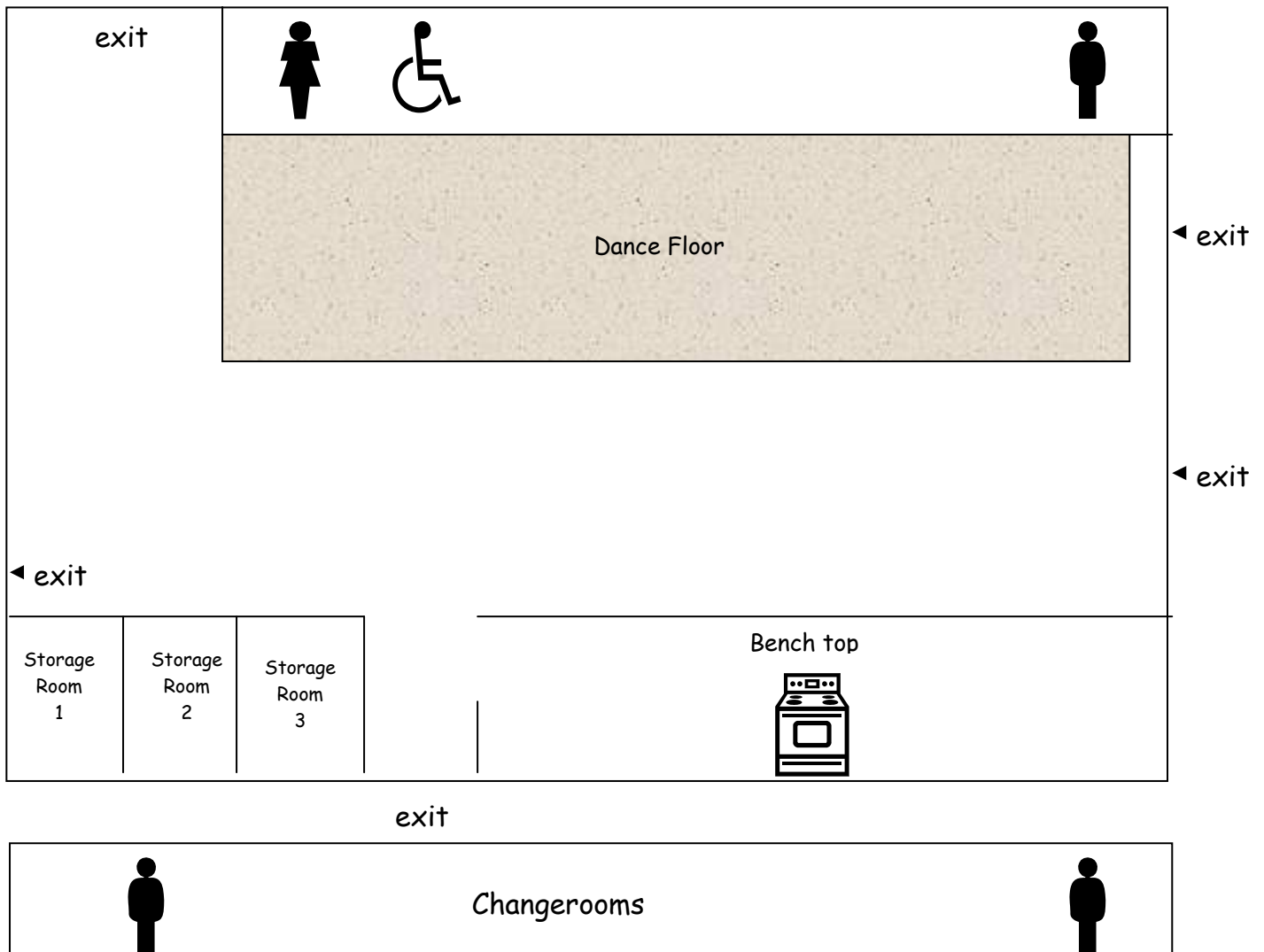
KITCHEN

Stove:	1 oven/grill stove with warmer
Fridge:	fridge/freezer
Urn:	1 wall unit
Bins:	1 small bin
Cupboard:	no lockable cupboards. Ample bench space and shelving.



City of Mandurah ~ Facility Information Guide

Falcon Pavilion - Diagram



Directions to the FALCON PAVILION

- Travel South along Old Coast Road
- Go straight ahead at the Peelwood Parade Lights
- Turn RIGHT into BAROY STREET opposite the Miami Shopping Centre
- Turn RIGHT again into FLAME STREET