

# City of Mandurah ~ Facility Information Guide

## MADORA BAY HALL Orelia Street, Madora Bay

### General Description

Smaller community hall with hard-wood floors and face brick, with a private children's playground which overlooks Coote Reserve. The centre is ideal for a variety of smaller functions such as family reunions, club meetings, training sessions and seminars.

External



Interior



### General Information



<b>Capacity:</b>	approx 80 people
<b>Security:</b>	Abloy key System
<b>Temperature Control:</b>	4 ceiling fans and 4 bar heaters Air conditioning
<b>Safety:</b>	Fire extinguishers and blankets
<b>Disabled Access:</b>	No ramp. There is a small step
<b>Toilets:</b>	Ladies and gents
<b>Storage:</b>	Storage room 1 - locked Storage room 2 - built in cupboards, lockable
<b>Cleaning Equipment:</b>	Contained in storage room 2
<b>Noticeboards:</b>	2 in main hall
<b>Electricity:</b>	Power points in main hall, kitchen, foyer and storage room
<b>Parking:</b>	45 bays, 2 disabled

### MAIN HALL

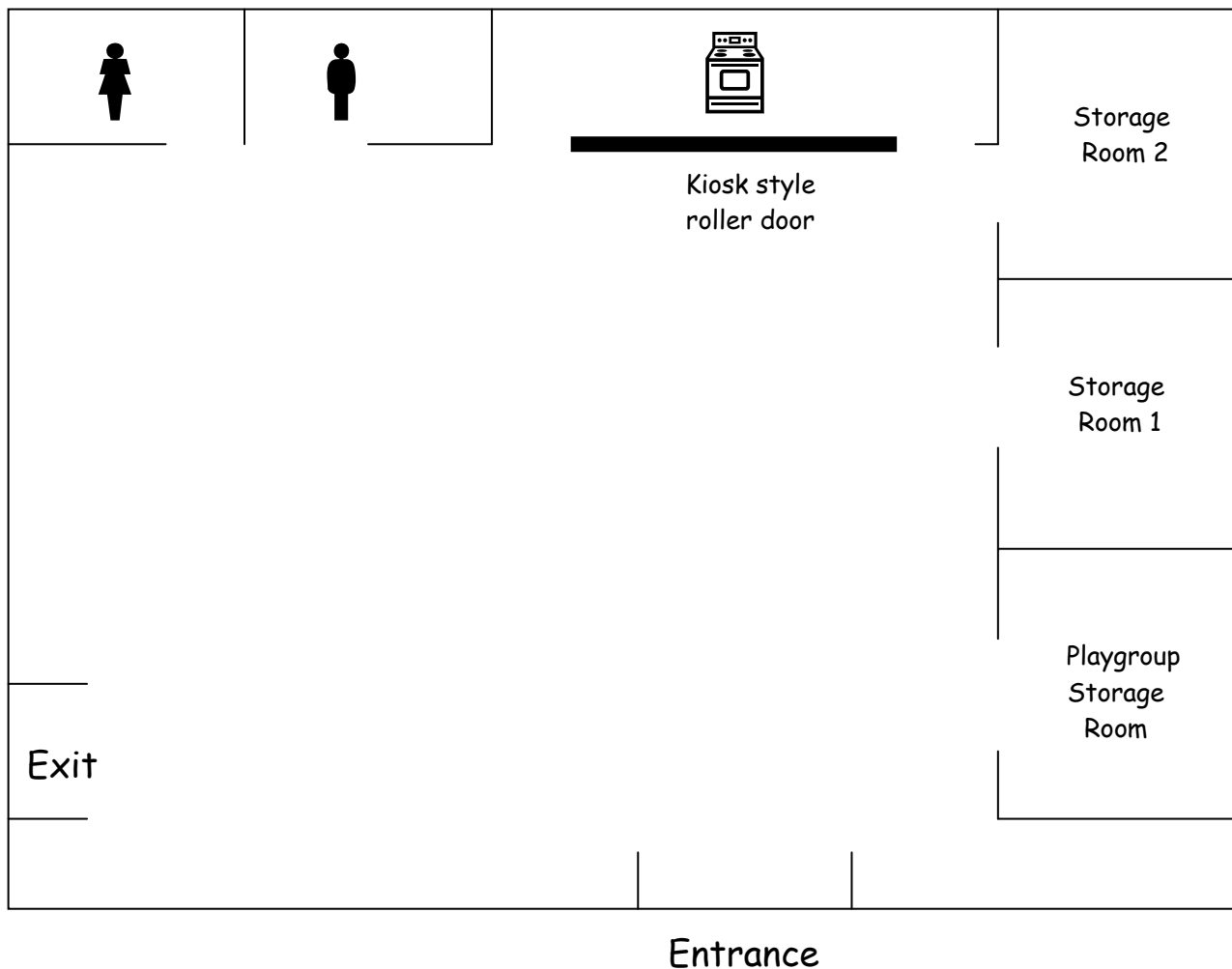
<b>Tables:</b>	12 Tables
<b>Chairs:</b>	86 Chairs
<b>Floor:</b>	Polished parquetry floor

### KITCHEN

<b>Stove:</b>	1 standard electric oven/grill stove
<b>Fridge:</b>	fridge/freezer
<b>Urn:</b>	1 free standing - 20 litre
<b>Bins:</b>	1 kitchen bin
<b>Cupboard:</b>	cupboards, none lockable



Madora Bay Hall - Diagram



Directions to the  
MADORA BAY HALL

- Travel North / South along FREMANTLE Road
- Turn LEFT / RIGHT into MADORA BEACH Road
- Turn LEFT into CHALLENGER Road
- Turn LEFT into ORELIA and the Hall is located at the top of the hill on the Left-hand side.