

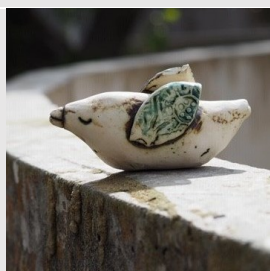
TINY TREASURES

CHRISTMAS ARTISTS' SALE

14 NOV - 20 DEC

CONTEMPORARY ART SPACES MANDURAH

MEET THE ARTISTS



Ability Arts

The Ability Arts artists are a diverse mix of local creatives, living with disabilities or mental health issues. The group works on individual self-guided projects and group projects in which each artist contributes their skills and ideas.



Alana Grant

Alana's artwork is created using ceramics and mixed media and reflects the connection between humans and nature.



Alasdair Wardle

Alasdair is fascinated by numbats - the emblem of Western Australia but also an endangered species. His varied work often incorporates these unique and enchanting animals. This year Alasdair has hand block-printed numbats on bags. Alasdair has lived and worked in Mandurah for over fifteen years.



Amanda Harris

Amanda's work is best described as a whimsical storybook, weaving narratives with patterning, animals and everyday life. She loves to create in small scale as she believes there is power in the small.



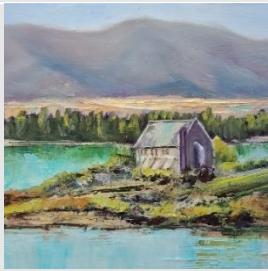
Andy McNeill

Over the last two years Andy has been inspired by our native wildlife to capture the beauty of the natural world. He is a volunteer reptile relocater which is where his love of photography started, taking photos of venomous snakes. His passion has grown into more than just snakes, now capturing the vast majority of our native world.



Angela Downing

Angela is inspired by challenging and different media and her work embraces diverse creative abilities. Her goal is to encourage others to step out of their comfort zone and to utilize the tools and media that they have available to them. It is with this in mind that she enjoys creating a selection of artworks that most people could achieve with a little encouragement. She hopes her work will inspire others to enjoy the creative process.



Barb Thoms

Travelling has stimulated Barb's artistic development and it was during her travels that her love of outdoor painting emerged. It allows her to connect directly with her subject and with her bold use of the palette knife, combined with thick, juicy paint, she strives for images that engage and impact the viewer.



Beate Kratt

Departure, time and movement are themes constantly returning into Beate's works, nourished through her ongoing travels and her life in Australia. Photography is used as a vehicle to understand and gain deeper contact with the landscapes and places around her. She moved over the years from a photographer to a mixed media artist, working with digital collages, experimental printing and encaustic.



Brigitte Schenkels

Brigitte's Jewels are original handcrafted art in the form of unique leather pieces of kids, women's and men's jewellery. Brigitte believes there is a value in creating something handmade. A handmade object carries within it the energy of the maker and imprints a piece of the artist's soul.



Carmel Sayer

Carmel Sayer is a Mandurah based, conceptual artist who enjoys many art mediums including sculpting and painting. She likes to use her art to explore the relationship between spirituality, disconnection and mental health. For this exhibition she has produced small paintings of dogs and also knives, made from old high carbon steel used in the historic Midland Railway Workshops in WA.



Carol Nicolson

Carol produces ceramic decorative and functional wares using both hand building techniques and wheel work. Her new range includes small serving dishes and pots and spoons designed for drizzling your dressing and dressing up your tableware.



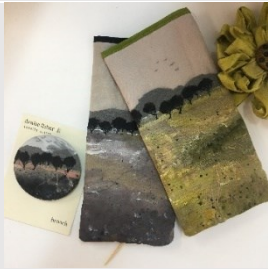
Cindy Wright

Cindy creates hand-crafted beads that are shaped and decorated in an 800°C flame, then annealed for 24 hours to ensure the glass remains stable. The beads are then used to make jewellery and to enhance high quality 305 stainless steel cutlery to look pretty on the cheese board and dinner table.



Debra Petit

Debra is a Mandurah based mixed media artist who enjoys creating artwork with emotional content. She paints to express feelings and experiences of life, pushing beyond her comfort zone, experimenting with different materials, methods and subject matter. Debra finds her best works are those where she has followed her instincts and experimented with new techniques. Her range of works include a combination of collagraphs, monoprints, collage and painting reflecting on her life interests.



Denise Fisher

Raised in the southern forest of Western Australia, Mandurah based textile artist Denise Fisher is influenced by her childhood experiences wandering through the bush with her father. Memories from these times inspire her work. Denise works intuitively with fabrics creating contemporary hand painted, layered and stitched jewellery and other wearable art.



Diane Tasker

Being largely kinesthetic by nature, Diane has always been drawn to expressing her captivation and wonder of our world and people around her creatively, through various mediums and media. Color, texture, sights, sounds, people and the constant awe of the reality we experience resonates deeply with her inner self and she loves to experiment with aleatoric processes, which also reflects the way life unfolds.



Elli Moody

Elli is a Falcon based artist and illustrator. Elli moved to WA in 2012 and pursued a new direction facilitating community arts projects and working as a facilitator for the Ability Arts program. Recently Elli has started working with clay and enjoys creating pieces with personality which tell a story.



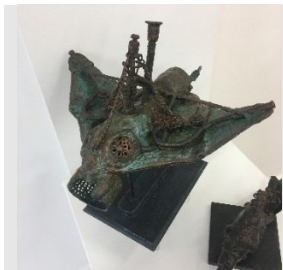
Emma Reid

Emma is a Jewish descendant and has felt connected with and worked around concepts to include both sides of her history, including her current concept "A Foot in Two Worlds". Emma works Maori pattern/Kowhaiwhai (traditional and self-created) and other imagery into her art, which can be seen in her latest works on board.



Gabi Smith

For the past 10 years, Gabi has playfully created clay art with simple, yet beautiful designs, inspired by her deep connection with nature, spirit and her fascination with sacred geometry and mystic symbols. The essential oil pendants allow us to connect with the healing qualities of earth (clay), nature (essential oil) and the significance of the colour and the design. Gabi intricately hand-carves her clay pieces, often using a technique called sgraffito: scratching through the underglaze to reveal the original colour of the terracotta clay.



Gary Halls

Gary started making steampunk sculptures about 5 years ago out of found objects. He tries to give each sculpture a sense of history and a dark gothic feeling of the Victorian era. Steampunk has been described as 'Victorian Futurism' which is the way he explains the art form to others when asked. He often has people giving him bits and pieces now they have seen some of his work. The sculptures give him an opportunity to express his creativity and escapism in engaging in this form of fantasy.



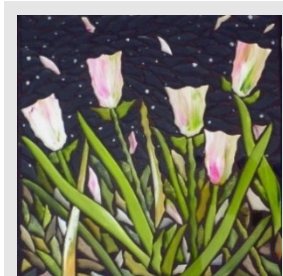
Gaye Holdsworth

Gaye is a member of the Peel Photographic Group who enjoys taking photos. For Tiny Treasures she has produced mugs and jigsaw puzzles with her photography printed on.



Hilly Coufreur

Hilly is a Mandurah based artist who works mainly in acrylics. With the use of colour and paint she likes to respond to what she sees around her or what moves her. Her works are a process of spontaneous gestures, adding, moving and subtracting paint. She builds up layers of paint, letting the painting evolve, working on patterns and details as they emerge. Only using palette knives allows her loose and free movement on the canvas.



Jean and June Pastore

Jean and June work from their studio in Port Bouvard, Wannanup, Western Australia and they are well known for developing their own painting technique on glass. Their multi-award winning practice reflects stories from their life and each piece is created with feeling and is truly an original. Jean and June work together to create their art in glass as well as acrylic, oil paints and mixed media, including wax, metal, wood and fibre art.



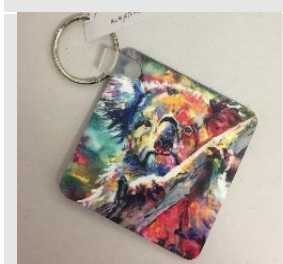
Jill Fryer

Jill Fryer is a West Australian artist working in acrylics, watercolours, drawing and printmaking. She has had a recent exhibition at CASM that included soft doll sculptures and is currently working toward an exhibition in Dwellingup at Lost Eden Creatives.



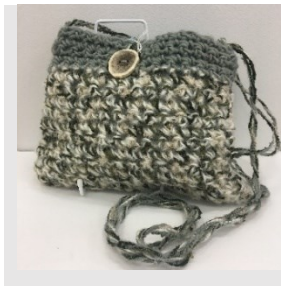
Jonathan Wright

Jonathan finds the act of clay sculpting challenging, intense and engrossing. If the muses are on side and the resulting form seems pleasing (even a few days later), he will then go through the process of casting the form in glass. Beautiful glass - sometimes transparent, perhaps colourful, with a surface ranging from rough ground to highly polished.



Jos Coufreur

Jos is a Mandurah based artist who has been painting and drawing from a very young age. Since leaving art school in Holland he has been on a long journey of discovery as an artist. The turning point in his career was his discovery of 'Spontaneous Realism' as he loves to let the colours form the picture. For this exhibition he has produced magnets, key rings and cards from his original paintings.



Judith Gardiner

Judith Gardiner has been working with textiles for 30 years. She loves colours, patterns and the vast number of techniques for creating works with fabric. With pieces that have been displayed in exhibitions nationally and overseas, Judith is inspired by nature and her works always seek to evoke a sense of place and our relationship with the landscape.



Julie Smith

Julie is a Mandurah based artist who has been creating unique and quality jewellery for over 15 years. Her practice focuses on making pieces from sterling silver, Bali and Thai silver, freshwater pearls and gemstones, and Swarovski crystals. She makes sure to finish her items to a very high standard, and each piece is unique.



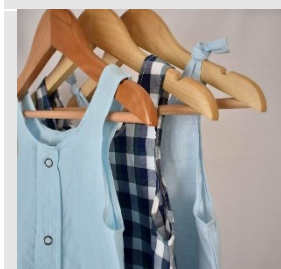
Kathleen Philip

Kathleen is an artist who enjoys sculpting. She takes inspiration from wildlife and for this exhibition she has enjoyed creating sculptures of different animals.



Kerri Nicholls

Kerri works with native wood and seed pods recombining with resin. Embellishment is with copper leaf, leather and pyrographic techniques. Pieces are handmade and lathe-turned using recycled and locally sourced timbers.



Liana McNeill

Liana is the owner of the local small business, little leo. The business started as an idea to up-cycle adult clothing that was preloved into something that could be loved again but it's evolved into something that's more about being sustainable with the way we make and produce clothes. The idea is to move away from the fast fashion industry that's plaguing our world today to something that is more ethical and sustainable.



Lisa Payton

The inspirational formations and aspects of nature combined with Lisa's creativity is what drives her to design and construct elaborate pieces of resin jewellery and resin homewares. From this creativity, free flowing shapes and designs are created. Within each of these designed shapes, imitations of island abnormalities surrounded by sea and waves, with scattering of opals are displayed.



Margaret Bennett

Margaret is a Mandurah based textile artist who has created a range of handmade bags for the Market Place exhibition in Tiny Treasures.



Margaret Wyatt

Margaret was born in Western Australia and since she was young has enjoyed painting and creating designs in her artwork. She has been in numerous art exhibitions where she has won prizes. She recently found another aspect of art which she enjoys, jewellery making, particularly working with texture, colours and designs. She finds a wonderful sense of achievement in watching the work evolve and seeing the joy it brings to others when they wear her jewellery.



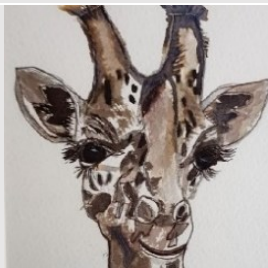
Margot Wiburd

Individually hand-knitted dogs, each one different, for sale in exchange for a \$30 donation, with 100% of proceeds raised going to Greyhound Adoptions WA.



Marinella Piccirillo

Marinella endeavors to express a personal idea of beauty and simplicity in her work. She aims to show this through the charm in everyday objects, and how these things make a difference in our lives. She is currently creating a range of paintings that depict her favourite houseplants from different emotive perspectives.



Marion Gartrell

Marion has been practicing art for over 15 years and is always learning new techniques by entering art exhibitions and attending workshops. She enjoys working in all mediums; acrylic, oils and watercolour. Marion has attended TAFE for drawing classes and photography. Lately, she has been enjoying mixed medium, incorporating photos, waxes, metal and beading.



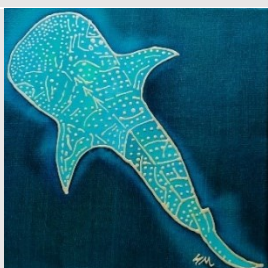
Patricia Hines

In recent years Patricia has been experimenting with both ash and other glaze chemistry to create unique colours and textures for her range of funky handmade bottles. She also has been printing onto clay using stencils and silk screen images often overlaid with hand painting to make discs and slab pots.



Paul Fleetham

Paul is a Mandurah based digital artist with 35 years' experience. He produces stylistically hybrid artworks that incorporate abstraction, photography, landscape and graphic images.



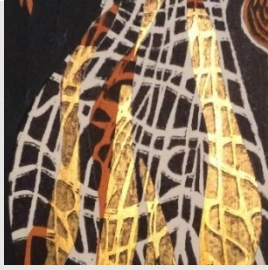
Sheila McNeill

Sheila is inspired by nature, especially the ocean. She paints to keep our connection with the natural world alive and to remind others about the beauty that exists all around us and to take a moment to celebrate it. Sheila mixes and blends the dyes while they are flowing on the silk, then uses a resist to control the flow and to create the images from nature. She then steams each artwork or scarf to fix the dyes, and washes them ready to wear or to hang on the wall.



Simone Tichelaar

Simone has been exhibiting and selling her work for more than five years. She loves to create shapes, figurines and jewellery from earthenware clay. When she opens her little kiln, she feels it is like opening Christmas presents. It is always a surprise to see what the end results of her endeavours are, which are always inspired by nature.



Stephne Sands

Stephne's art is inspired by her love of nature in all its forms, patterns and colours, in order and in chaos, its power and the impact humanity has on it. She likes to use a variety of mediums including printmaking, painting and drawing to give expression to her passion.



Sue Edge

Sue was diagnosed with Parkinson's in 2010. A quote by Michael J. Fox - "I don't have a choice whether or not I have Parkinson's. But surrounding that non-choice are a million choices I can make" - pulled her out of her initial depression and she discovered she could paint. Colourful long-legged birds and crazy emus have become her signature subjects. Her artwork is featured on printed bags, accessories and coasters and she has recently published a self-illustrated book explaining Parkinson's Disease for children.



Sue Grey- Smith

Sue works in pencil and gouache (watercolour) on paper. She is interested in the landscape of Western Australia - especially the salt lakes of the mid-West and the flat plains of the Nullarbor. Her small paintings evoke the wide space and colours of WA. Sue has lived in Mandurah for over ten years.



Susan Smith

Susan's mixed media artworks allow her to explore a wonderful array of styles and techniques while recreating her 'happy places' - snorkeling on the colourful, chaotic yet somehow soothing Ningaloo reef, taking walks on the beaches of WA's stunning coastlines, or indulging in her love of flowers, birds and nature.



Tich Dixon

Tich is a multidisciplinary artist working in both 2D and 3D ceramic sculpture and assemblage, with found objects and recycled materials. Her practice includes printmaking, drawing, painting and community art. She is attracted to nature and environmental issues within the focus of my creative pursuit.



Tiffany Foster

Tiffany is inspired by her beautiful Mandurah surrounds and enjoys trying to capture the light and colour of her subjects in soft pastel. Landscapes are painted en plein air, often in the company of the Mandurah Plein Air Artists. She is currently enjoying trying to capture the character of small birds, many of which she has encountered in the Creery Wetlands. Originally from the mountainous regions of East Gippsland in Victoria she is newly enthralled by the magnificent waterways and skyscapes on offer in the Peel region.



Tony McAlinden

Tony was born in Bridgetown in 1941 and from an early age enjoyed drawing and painting pictures. Over the years this love of art has developed and been enhanced by tutoring from the late Australian artist Leonard Long. Tony recently joined the Plein Air artist group in Mandurah. This collection of scenes from the district, has been produced while painting with the group.



Ute Kruse

Ute's subject matter is concerned with that of nature, whether it is a landscape, bird or flower. Her goal is to inspire those who see her work to look more carefully at the world around us.



Winifred Punch

Winifred's fabulous range of homemade jams and preserves can be found in the Market Place section of the exhibition.

The City of Mandurah acknowledges the Bindjareb people as traditional custodians of this land.

We acknowledge and respect their continuing culture and the unique contribution they make to the life of this community.