

# Visual Story

## Oddysea





## About this visual story

This visual story has been created to support children attending *Oddyseas*.

It explains what to expect during the event.

There is a part at the end for parents and caregivers.





## Event information

Oddysesea is a theatre show with music and puppets.

It is made for children with disability and their families to enjoy.





## Location

You will come to Dawesville Community Centre, where a special beach has been made in a big room.

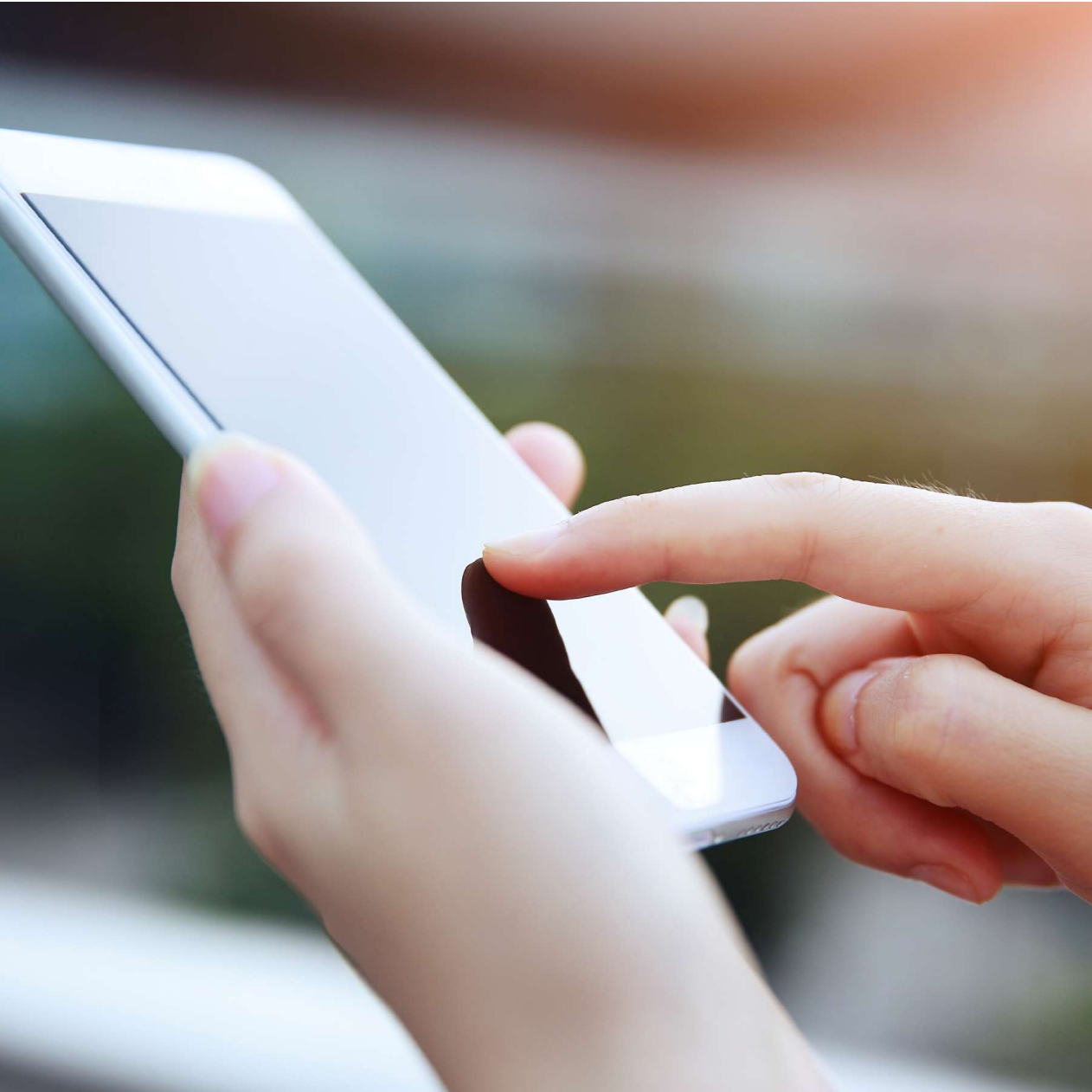
**\*\*Parents/Caregivers – more information about parking and access at the end**



## Arriving at the venue

There will be signs to show you where to go.





## **What to bring**

You might need to show your ticket when you get there.



## Toilets

There are toilets for everyone to use.



## **Where the show happens**

The show is in a big room.

The lights will be a bit darker, but you can still see everything.





## **Before the show**

Before the show starts,  
you can play with water  
and sand.





## During the show

You will go on an adventure with Crab and Turtle.





## **During the show**

**(Sensory Elements)**

The performers will sometimes give you things to touch like sand, shells and corals.

Or to smell, like seaweed.

Or to taste, like jelly snakes.

You can say – “Yes please”  
Or “No thank you.”



## **During the show**

(Lighting)

When we go deep under the water in the show, it gets a bit dark and we can play with torches.





## Taking breaks

There are soft bean bags at the back if you need a rest or to take a break.



## At the end

When the show is over,  
we will sing goodbye and  
go home.





**Enjoy your visit**

We hope you have lots of fun at *Oddysea*.

# Information for Parents and Caregivers

## Location

The event takes place at the brand new Dawesville Community Centre:

2 Woodstock Ave, Dawesville WA 6211

## Getting there

There is ample parking at the centre, shared with the nearby businesses.

There are two ACROD spaces directly outside the main entrance.

You can also catch a bus to a stop nearby. For more information check the Transperth Journey Planner.





## Arriving at the Venue

You will enter through the main entrance, on the same side as the car park.

There will be signage pointing you to the right room in the building.

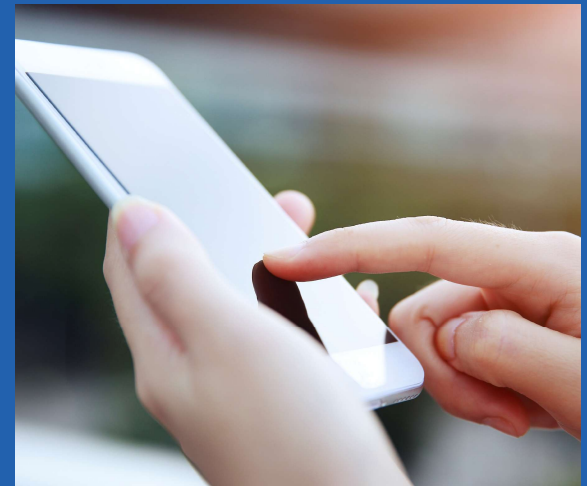
You should aim to arrive between 5 and 20 minutes before the show.



## What to bring

You might need to show your ticket or confirmation email when you arrive. You can print this out or show us on your phone.

If your child needs anything to be comfortable in the performance, like fidget toys or noise-reducing headphones, you can bring these along.



## Facilities and Accessibility

The venue is wheelchair accessible.

In addition to male and female toilets, there is a Universal Access Toilet onsite.



## Assistance

If you require assistance with anything, please feel to reach out to the friendly Mandurah Arts Festival staff on the door.





## Contact

### City of Mandurah

PO Box 210, Mandurah WA 6210

[council@mandurah.wa.gov.au](mailto:council@mandurah.wa.gov.au)

[Mandurah.wa.gov.au](http://Mandurah.wa.gov.au)

9550 3777

Arts and Culture team

[artsculture@mandurah.wa.gov.au](mailto:artsculture@mandurah.wa.gov.au)

9550 3842

If you need help to speak or listen on the phone  
you can use the National Relay Service on 1300  
555 727

For more information visit: [relayservice.gov.au](http://relayservice.gov.au)



Scan code for more information  
about access and inclusion at  
the City of Mandurah.

