

WASTE AND RECYCLING GUIDE

2020/2021



CLEANAWAY

City of
MANDURAH

RECYCLING BIN

Keep recycling clean, dry and unbagged to maximise recovery



Things to recycle every time ✓

Contamination in your bin can ruin your recycling



Things to leave out of your recycling bin ✗



Yellow Lid Recycling Bin
Collected fortnightly

RECYCLING BIN

GENERAL WASTE BIN

Use me for:

- ✓ Food scraps
- ✓ Nappies, wipes and sanitary products
- ✓ Garden waste
- ✓ Animal waste
- ✓ Kitty litter
- ✓ Seafood waste (wrapped in newspaper)
- ✓ Ceramics/pyrex
- ✓ Plastic plant pots
- ✓ Treated timber
- ✓ Bottled cooking oil
- ✓ Polystyrene
- ✓ Plumbing/reticulation pipe and fittings

Do not use me for:

- ✗ Batteries (household and car*)
- ✗ Recyclable materials
- ✗ Chemicals
- ✗ Light globes
- ✗ Soil, sand and rocks
- ✗ Building materials
- ✗ Hazardous waste
- ✗ Gas bottles
- ✗ Hot ash
- ✗ Motor oil*
- ✗ Syringes or medical waste
- ✗ Asbestos

* Car Batteries / Motor Oil

Cleanaway will collect up to 5L of used engine waste oil and one car battery each fortnight. These items can be placed next to your recycling bin. Please place the items where the driver can clearly see them (not between the rubbish and recycling bins).

Alternatively these items can be taken to the Waste Management Centre free of charge.



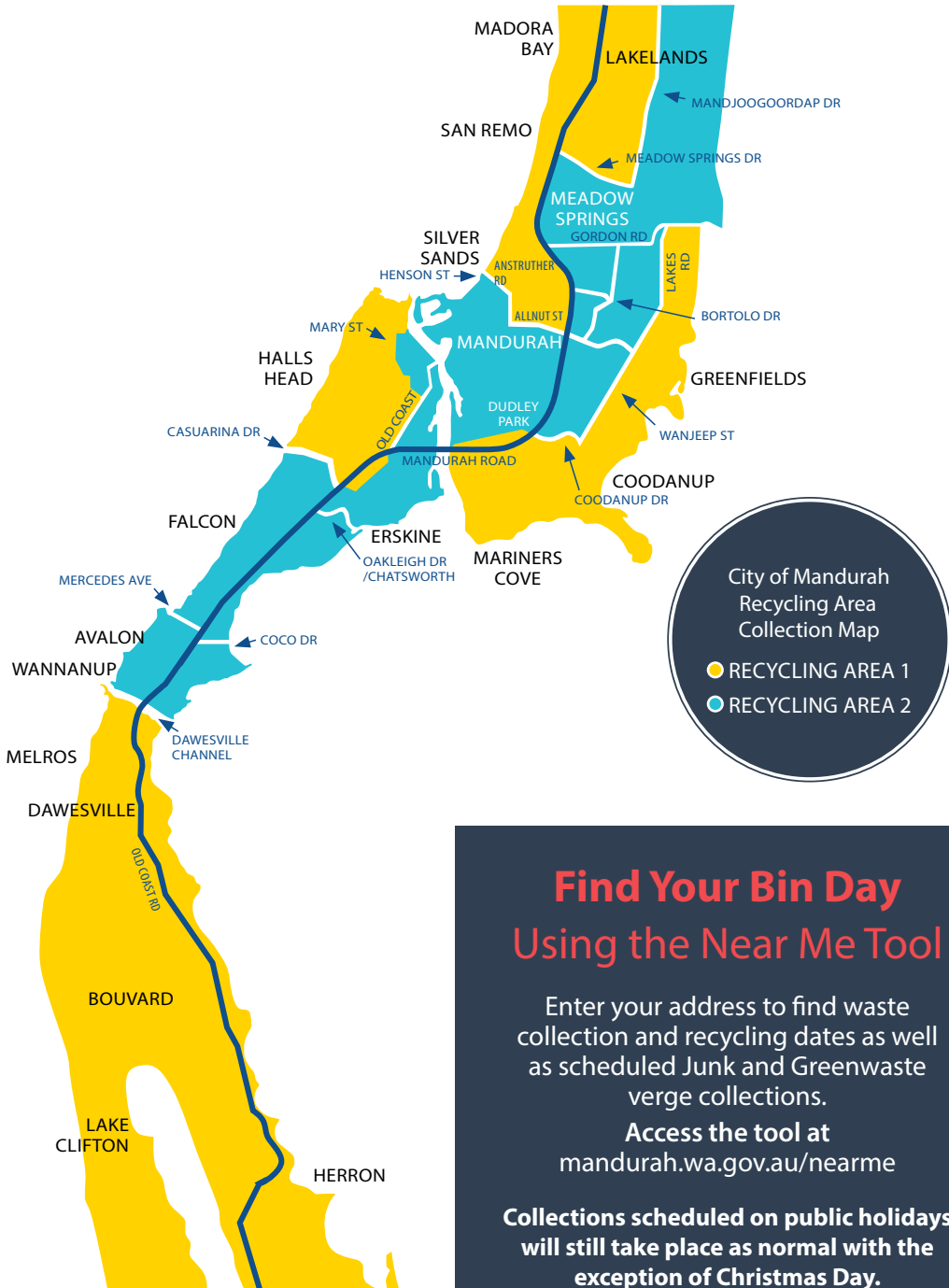
Green Lid Rubbish Bin
Collected weekly



Top Waste Tips

- Keep the weight of the bin below 70kg
- Ensure the lid can be fully closed
- Clean the bin regularly
- Freeze seafood and odorous waste. Place in the bin the night before collection.
- Place bin out by 6.00am on collection day

BIN COLLECTION SCHEDULE



July 2020

S	M	T	W	T	F	S
			1	2	3	4
5	6	7	8	9	10	11
12	13	14	15	16	17	18
19	20	21	22	23	24	25
26	27	28	29	30	31	

August 2020

S	M	T	W	T	F	S
						1
2	3	4	5	6	7	8
9	10	11	12	13	14	15
16	17	18	19	20	21	22
23	24	25	26	27	28	29
30	31					

September 2020

S	M	T	W	T	F	S
		1	2	3	4	5
6	7	8	9	10	11	12
13	14	15	16	17	18	19
20	21	22	23	24	25	26
27	28	29	30			

October 2020

S	M	T	W	T	F	S
				1	2	3
4	5	6	7	8	9	10
11	12	13	14	15	16	17
18	19	20	21	22	23	24
25	26	27	28	29	30	31

November 2020

S	M	T	W	T	F	S
1	2	3	4	5	6	7
8	9	10	11	12	13	14
15	16	17	18	19	20	21
22	23	24	25	26	27	28
29	30					

December 2020

S	M	T	W	T	F	S
			1	2	3	4
6	7	8	9	10	11	12
13	14	15	16	17	18	19
20	21	22	23	24	25	26
27	28	29	30	31		

January 2021

S	M	T	W	T	F	S
					1	2
3	4	5	6	7	8	9
10	11	12	13	14	15	16
17	18	19	20	21	22	23
24	25	26	27	28	29	30
31						

February 2021

S	M	T	W	T	F	S
	1	2	3	4	5	6
7	8	9	10	11	12	13
14	15	16	17	18	19	20
21	22	23	24	25	26	27
28						

March 2021

S	M	T	W	T	F	S
	1	2	3	4	5	6
7	8	9	10	11	12	13
14	15	16	17	18	19	20
21	22	23	24	25	26	27
28	29	30	31			

April 2021

S	M	T	W	T	F	S
				1	2	3
4	5	6	7	8	9	10
11	12	13	14	15	16	17
18	19	20	21	22	23	24
25	26	27	28	29	30	

May 2021

S	M	T	W	T	F	S
						1
2	3	4	5	6	7	8
9	10	11	12	13	14	15
16	17	18	19	20	21	22
23	24	25	26	27	28	29
30	31					

June 2021

S	M	T	W	T	F	S
		1	2	3	4	5
6	7	8	9	10	11	12
13	14	15	16	17	18	19
20	21	22	23	24	25	26
27	28	29	30			

- Recycling Area 1
- Recycling Area 2
- Public Holiday

BIN COLLECTION GUIDELINES

Have you left enough space?

To ensure our waste trucks can empty your bins, there needs to be enough space between them.



- Place your bin on the verge by 6:00am on the day of collection
- Place your bins on the verge so they are at least 0.5m apart to enable easy collection (refer to graphic above)
- Place your bin as close as practicable to the road/kerb in a upright position with the wheels facing the house
- Return bins to your property as soon as possible after collection (no later than 24 hours after collection)
- Avoid overfilling bins to ensure that the lid can close
- Keep weight of the bin below 70kg
- Green lidded rubbish bins are collected weekly and yellow lidded recycling bins are collected fortnightly

VERGE COLLECTION GUIDELINES

RESIDENTIAL GREEN WASTE VERGE COLLECTION

✓ You CAN put out:

- Garden prunings
- Tree loppings (>1.5m in length)
- Palm leaves
- Tree limbs, branches and small logs (>1.5m in length)



✗ You CANNOT put out:

- General rubbish or scrap metal
- Sand or soil materials
- Weeds and root materials
- Treated timber/pine
- Pallets
- Railway sleepers
- Bags waste or boxed green waste
- Volumes greater than 2m³
- Oversized green waste



RESIDENTIAL JUNK AND METALS VERGE COLLECTION

✓ You CAN put out:

- General waste and junk
- Whitegoods (doors must be detached)
- Furniture
- Scrap metal
- Timber products



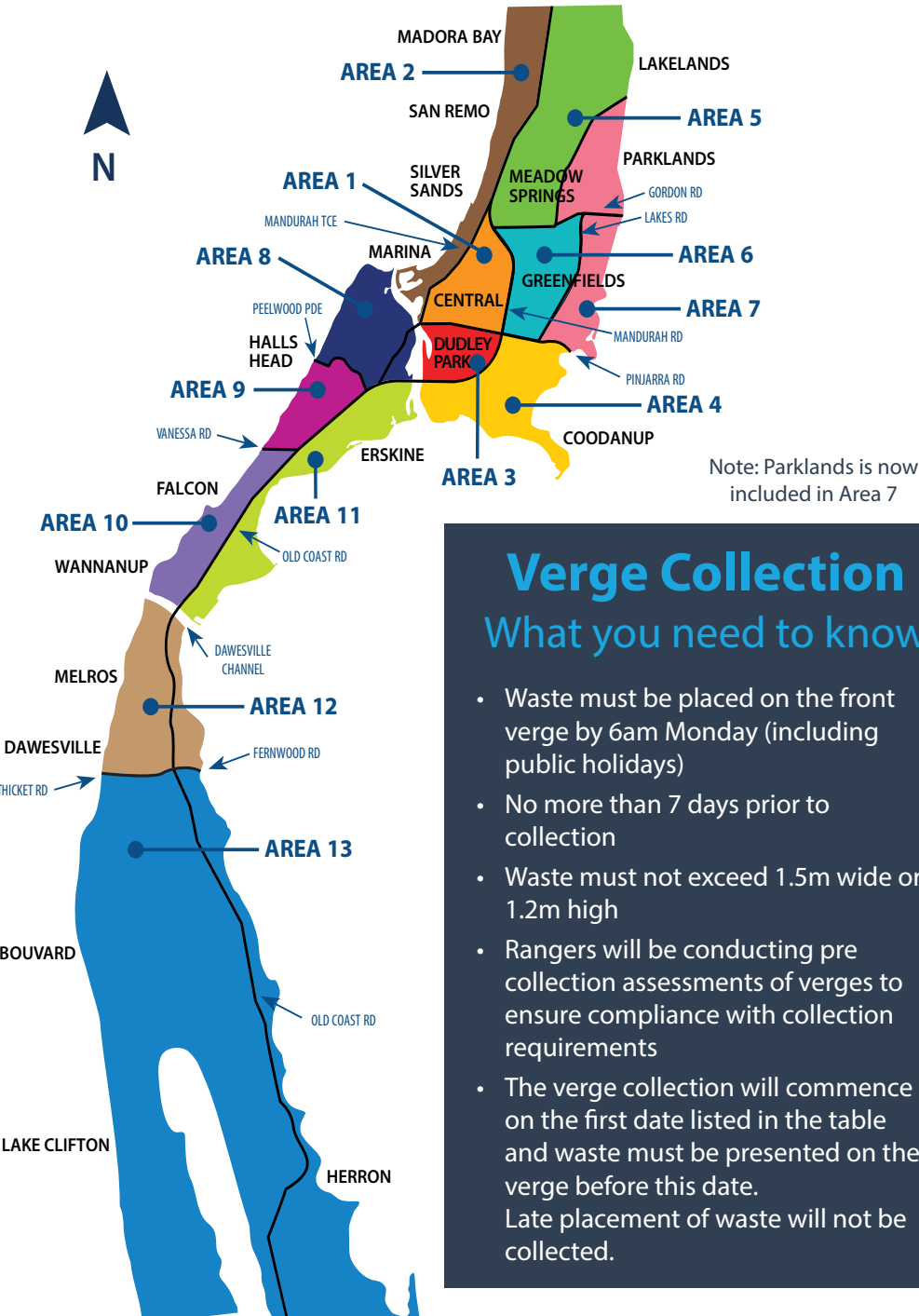
✗ You CANNOT put out:

- Green waste
- Asbestos or fibre cement products
- Building waste
- Car bodies, vehicle parts, tyres or batteries
- Household hazardous waste including paints, garden or household chemicals, fire extinguishers, gas cylinders, etc
- Medical/veterinary waste
- Domestic rubbish or food waste
- Table tops/plate glass/shower screens/mirrors
- Volumes greater than 3m³



Please place your junk and metals in two separate piles on the verge as a different truck collects each item.

VERGE COLLECTION SCHEDULE



Verge Collection What you need to know

- Waste must be placed on the front verge by 6am Monday (including public holidays)
- No more than 7 days prior to collection
- Waste must not exceed 1.5m wide or 1.2m high
- Rangers will be conducting pre collection assessments of verges to ensure compliance with collection requirements
- The verge collection will commence on the first date listed in the table and waste must be presented on the verge before this date. Late placement of waste will not be collected.

Collection Areas	Green Waste Verge Collection	Junk and Metals Verge Collection	Green Waste Verge Collection
Area 1	28 Sep - 3 Oct* 2020	8 - 13 Feb 2021	17 - 22 May 2021
Area 2	5 - 10 Oct 2020	15 - 20 Feb 2021	24 - 29 May 2021
Area 3	12 - 17 Oct 2020	22 - 27 Feb 2021	31 May - 5 Jun 2021
Area 4	12 - 17 Oct 2020	1 - 6 Mar* 2021	31 May - 5 Jun 2021
Area 5	19 - 24 Oct 2020	8 - 13 Mar 2021	7 - 12 Jun* 2021
Area 6	26 - 31 Oct 2020	15 - 20 Mar 2021	14 - 19 Jun 2021
Area 7	26 - 31 Oct 2020	22 - 27 Mar 2021	21 - 26 Jun 2021
Area 8	2 - 7 Nov 2020	29 Mar - 3 Apr* 2021	28 Jun - 3 Jul 2021
Area 9	2 - 7 Nov 2020	5 - 10 Apr* 2021	5 - 10 Jul 2021
Area 10	9 - 14 Nov 2020	12 - 17 Apr 2021	12 - 17 Jul 2021
Area 11	16 - 21 Nov 2020	19 - 24 Apr 2021	19 - 24 Jul 2021
Area 12	23 - 28 Nov 2020	26 Apr - 1 May* 2021	26 - 31 Jul 2021
Area 13	30 Nov - 5 Dec 2020	3 - 8 May 2021	2 - 7 Aug 2021

* Verge collection will still be undertaken on public holidays

RESIDENTIAL VERGE COLLECTION SCHEDULE

WASTE MANAGEMENT CENTRE

Waste Acceptance

- General waste/junk
- Green waste
- Building materials
- Glass
- Asbestos material (must be wrapped)
- Bricks/concrete
- dirt/soil

Household hazardous waste is also accepted, refer to website for list of items



Accepted Recyclable Items

- Bulk cardboard
- Car parts
- Lead-acid (car) batteries
- CFL's and fluoro tubes
- E-Waste
- Gas cylinders, flares & EPIRBs
- Motor Oil
- Mattresses
- Tyres
- White goods/ scrap metal
- Paint
- Dry cell household batteries (AA, AAA, C, D, etc)

Waste Vouchers

City of Mandurah provides ratepayers with 2 green and 2 general waste vouchers each year. The vouchers are attached to the bottom of the rates notice.

Please visit the City of Mandurah website and the Rates Notice booklet for further information.



Waste Management Centre
Corsican Pl, Parklands
9550 4700
Monday - Friday 7am - 4pm
Weekends and P/H 8am - 5pm
(Closed Christmas Day and Good Friday)



This project is funded by the Waste Authority through the Waste Avoidance and Resource Recovery Account